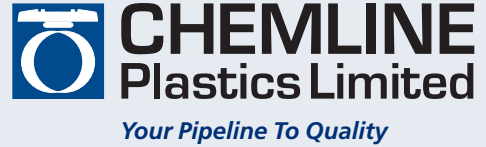


Low Torque Flange Gaskets

Chemline GA Series Low Torque Gaskets are recommended for all plastic piping systems to prevent initial flange leakage due to bolt over tightening. They are especially recommended for all Chemline solid plastic flanged body valves. The unique double convex ring design provides optimum sealing with a fraction of the bolt torque required for flat face gaskets. The Teflon® PTFE and PVDF gaskets have 0.4 mm sheet material bonded to EPDM. This increases elasticity, lowering bolt torques required to seal.



EPDM, Teflon®, PVDF*

SERIES: GA

SIZES: EPDM – 1/2" to 12"†
PTFE – 1/2" to 12"
PVDF – 1/2" to 10"

CLASS: ANSI 150 Full Face

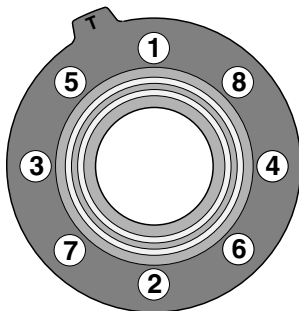
TEMPERATURE RANGE:

EPDM: –40 to 90°C (–40 to 194°F)
PTFE, PVDF: –40 to 120°C (–40 to 248°F)

Raised Face Design Low Bolt Torques to Seal Ideal for Plastic Flanges

Features

- **Low Flange Bolt Torques Required for Positive Seal** – Due to the moulded raised face – patented double convex ring design
- **Ideal for Thermoplastic Piping Systems**, also metal or plastic lined metal pipe systems for up to 250 psi
- **High Chemical Resistance** – PTFE-bonded and PVDF-bonded gaskets are suitable for extremely aggressive chemical services
- **Longer Gasket Life** – Because lower flange pressures are required for sealing

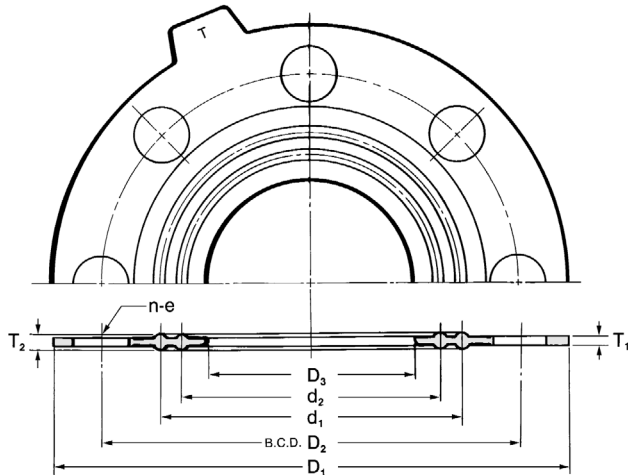


When installing, tighten lubricated flange bolts evenly and in a symmetrical pattern as shown above



* Teflon® PTFE and PVDF gaskets are 0.4 mm sheet bonded onto EPDM.
† EPDM is available special order in 14" and 16" sizes.

Low Torque Flange Gaskets



SAMPLE SPECIFICATIONS

All flange gaskets 1/2" to 12" are to be **Chemline GA Series** moulded raised face type with full face ANSI B16.1 (Class 150) dimensions. Material will be pure EPDM (or Teflon® PTFE-bonded or PVDF-bonded EPDM). Two concentric convex moulded rings will provide effective sealing using low bolt torques.

MATERIAL IDENTIFICATION TAB

EPDM = Solid EPDM

T = Teflon® PTFE bonded EPDM

PVDF = PVDF bonded EPDM

DUROMETER (HARDNESS)

EPDM – Shore A: 65° ± 3°

DIMENSIONS INCHES

Size	D ₁	D ₂	D ₃	d ₁	d ₂	n	e	T ₁	T ₂
1/2"	3.43	2.38	0.71	1.61	1.02	4	0.63	0.12	0.16
3/4"	3.79	2.76	0.87	1.85	1.26	4	0.63	0.12	0.16
1"	4.17	3.13	1.18	2.09	1.50	4	0.63	0.12	0.16
1-1/4"	4.53	3.50	1.46	2.56	1.97	4	0.63	0.12	0.16
1-1/2"	4.92	3.88	1.69	2.72	2.13	4	0.63	0.12	0.16
2"	5.19	4.74	2.13	3.27	2.68	4	0.75	0.12	0.16
2-1/2"	6.93	5.49	2.72	3.98	3.39	4	0.75	0.12	0.16
3"	7.44	6.00	3.15	4.41	3.86	4	0.75	0.12	0.20
4"	8.94	7.50	4.02	5.43	4.72	8	0.75	0.12	0.20
5"	9.92	8.50	5.00	6.54	5.71	8	0.87	0.12	0.20
6"	10.91	9.51	5.91	7.48	6.61	8	0.87	0.12	0.20
8"	13.43	11.71	7.80	9.72	8.50	8	0.87	0.12	0.20
10"	15.91	14.25	9.80	12.05	10.63	12	0.98	0.12	0.20
12"	18.94	17.01	11.81	13.86	12.76	12	0.98	0.12	0.20

RECOMMENDED BOLTS TORQUES† FT-LB.

WEIGHTS LB.

Size	EPDM				Teflon® PTFE and PVDF				EPDM	Teflon® & PVDF
	Working Pressure				Working Pressure					
	85 psi	142 psi	228 psi	250 psi*	85 psi	142 psi	228 psi	250 psi*		
1/2"	9.4	13.0	14.5	18.1	10.9	14.5	15.9	18.1	0.04	0.04
3/4"	9.4	13.0	14.5	18.1	10.9	14.5	15.9	18.1	0.05	0.05
1"	9.4	13.0	14.5	18.1	10.9	14.5	15.9	18.1	0.06	0.06
1-1/4"	10.9	13.8	16.7	21.7	13.0	15.9	18.8	21.7	0.08	0.08
1-1/2"	12.3	14.5	18.1	25.4	14.5	18.1	21.7	25.4	0.09	0.09
2"	12.3	14.5	18.1	25.4	14.5	18.1	21.7	25.4	0.12	0.12
2-1/2"	14.5	18.1	21.7	36.2	21.7	25.4	29.0	36.2	0.16	0.16
3"	14.5	18.1	21.7	36.2	21.7	25.4	29.0	36.2	0.18	0.18
4"	14.5	18.1	21.7	36.2	21.7	25.4	29.0	36.2	0.22	0.27
5"	18.1	21.7	25.4	43.5	25.4	29.0	36.2	43.5	0.28	0.34
6"	18.1	21.7	25.4	43.5	25.4	29.0	36.2	43.5	0.33	0.44
8"	21.7	25.4	29.0	58.0	29.0	36.2	43.5	58.0	0.44	0.51
10"	25.4	29.0	36.2	58.0	29.0	36.2	43.5	58.0	0.55	0.66
12"	29.0	36.2	43.5	58.0	36.2	43.5	50.7	58.0	0.81	0.99

† Bolt torques are for flat face flanges. * Maximum recommended torques are those listed for 250 psi service.



55 Guardsman Road, Thornhill, Ontario, Canada, L3T 6L2
 Tel: 905-889-7890 request@chemline.com
 Fax: 905-889-8553 www.chemline.com



Your Pipeline To Quality Valves, Piping, Flow Meters and Controls