

MAINTENANCE INSTRUCTIONS

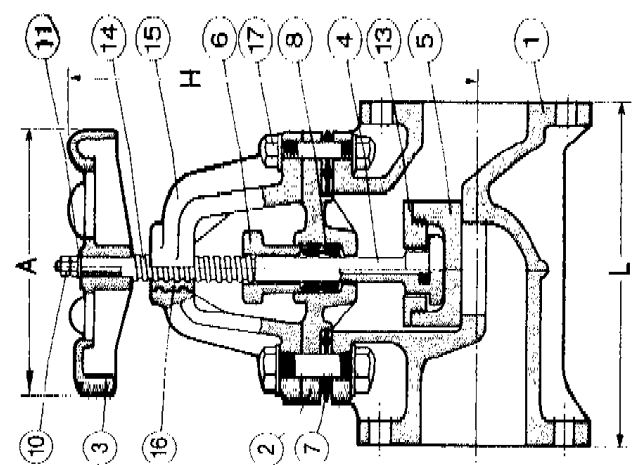
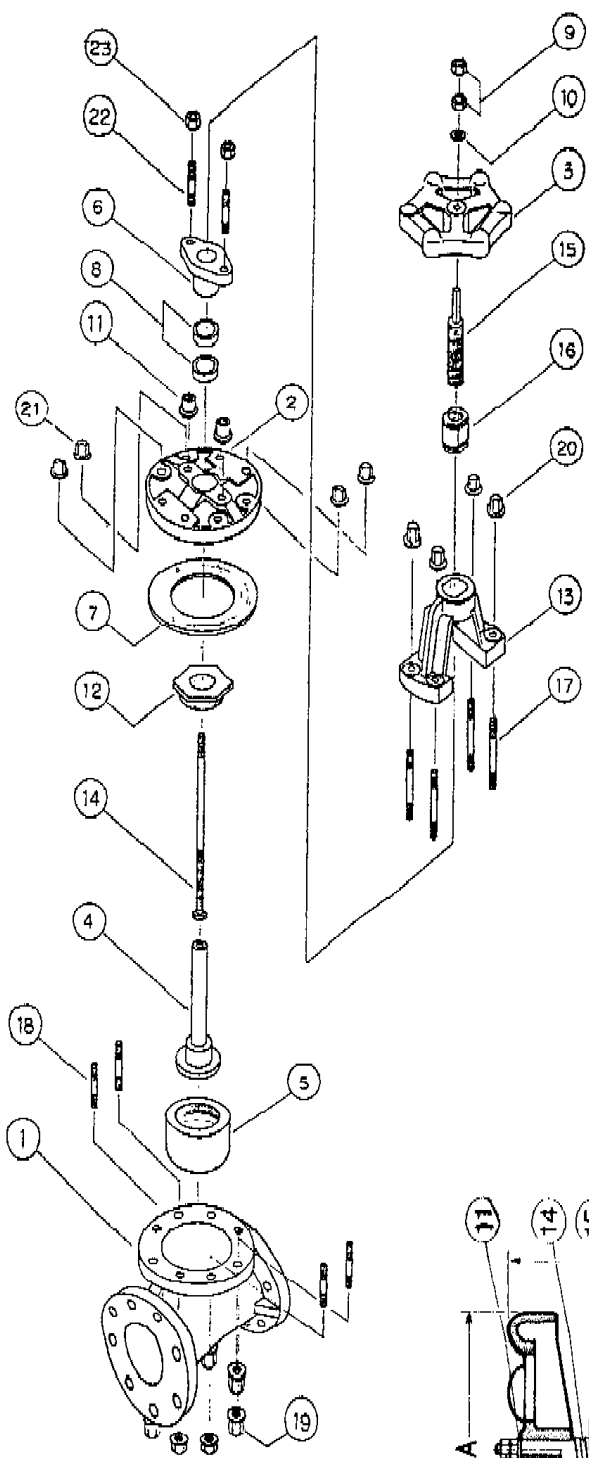
For Chemline Globe Valves Sizes 2-1/2" - 4"

Maintenance (2-1/2" - 4")

Refer to **ASSEMBLY DRAWING GV-01(B)**. And proceed as follows:

1. Remove bonnet and stem assembly (2 through 5) by unscrewing gland nut (2), or by loosening and removing bolts (17). The complete stem assembly should lift out of the valve body.
(Note: make sure there is no pressure in line prior to removing valve.)
2. The stem (4) is removed from the bonnet assembly by first removing the handwheel (3) by unscrewing nut (9). Loosen the stem and inspect for excessive wear and cracking.
3. Lubricate the seal (7) before replacing the shaft (4). Dow Corning III silicone compound recommended.
4. Inspect the body seat (1) and disc seat (5) for excessive wear and pitting. Pitting is caused by foreign objects being jammed between the sealing surfaces when closing the valve. If the disc seat (5) is damaged, replace the part.
Important: If the body seat is damaged replace the complete valve.
5. To reassemble valve, reverse steps 1 to 4 above.

(NOTE) When replacing the stem assembly back into the valve body, be sure that the stem is NOT in the closed position. If it is, the stem may be over extended and could damage the body seat when the body is re-tightened.



1	BODY	1	PVC/PP	11	WASHER	1	PVC
2	PVC	1	PVC/PP	12	GLAND NUT	1	PVC/PP
3	HANDWHEEL	1	PP	13	DISC RETAINER	1	PP
4	STEM	1	PVC/PP	14	STEM TOP	1	BRASS
5	DISC	1	PP	15	YOLK	1	PP
6	GLAND	1	PVC/PP	16	YOLK SLEEVE	1	BRONZE
7	BONNET SEAL	1	EPDM	17	BOLT & NUT	8	304 S.S.
8	STEM PACKING	2	EPDM	18	STUD & NUT	2	304 S.S.
10	NUT	1	PVC				

CHEMLINE PLASTICS

CHEMLINE

TITLE CHEMLINE GLOBE VALVE SIZES

SCALE

DATE

DR. BY

DWG. NO. GW01 (B)

C.H.D. BY

REV. 0

APP. BY

REFERENCE 2 - 1/2" - 4"