

MAINTENANCE INSTRUCTIONS
For Chemline 730 (formerly 700) Series Normally Closed Diaphragm Valve
Sizes 1/2" to 4"

Maintenance (all sizes)

Refer to **ASSEMBLY DRAWING NCDV REV 0.** And proceed as follows:

1. Remove plug (1) and cover (2).
2. Release springs (3), (4) and (5).
3. Undo lock nut (15) and washer (14).
4. Lift off spring support plate (13) and washer (12).
5. Remove o-ring (10) and spacing ring (11), if present (not on all models).
6. Remove control diaphragm (9) and washer (8).
7. Diaphragm support plate (7) lifts off from the spindle (6).
8. Remove spring washer (16) and quad ring (17) from bottom of spindle (6).
9. Remove plug (20), int. hex screw (22) and washer (21) from lower part (18) of valve.
10. Remove protective cap (28) hex screw (27) and washer (26).
11. Spindle bearing (19), compressor (23) and diaphragm (24) will separate from valve body (25).
12. Inspect diaphragm (24) and all parts for wear or abrasion.

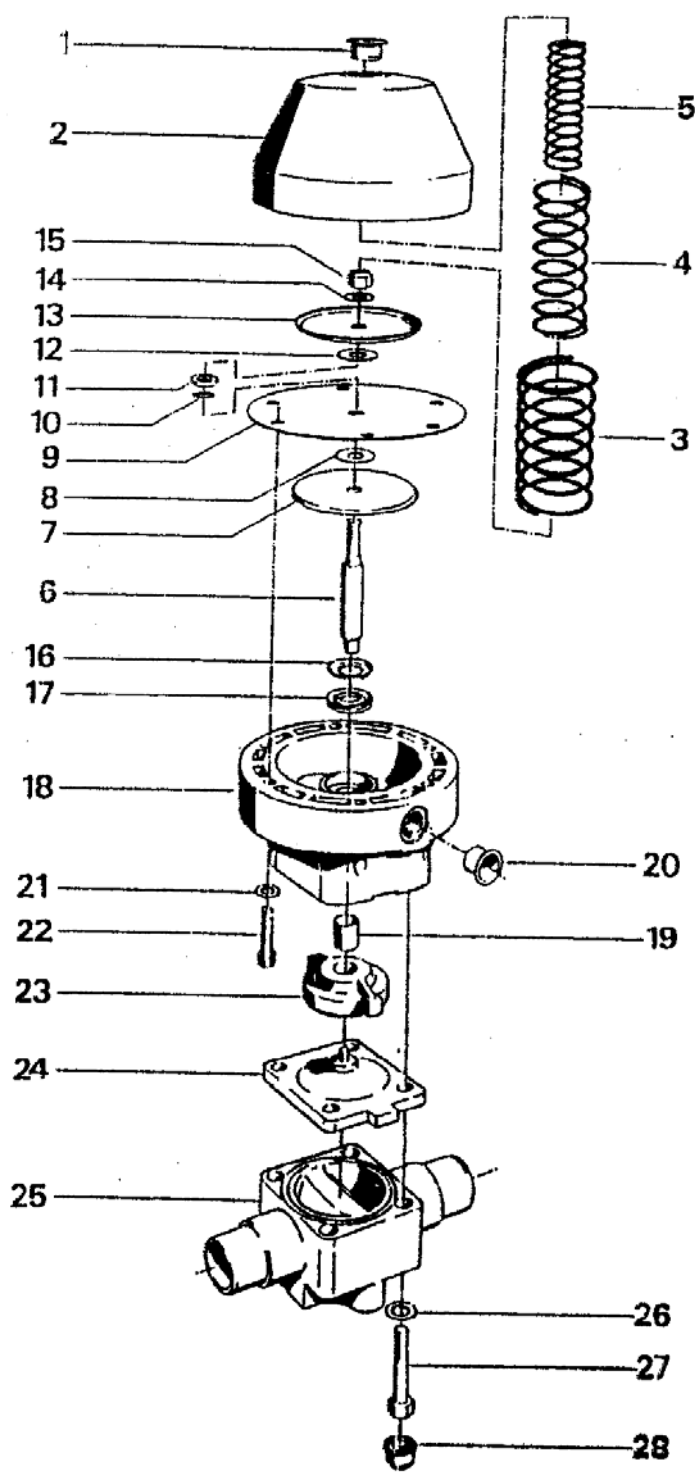
Maintenance Instructions N/C 730 Series Diaphragm Valve cont.

13. Replace parts as necessary.
14. Before re-assembling valve lubricate spindle (6), Dow Corning Silicone III or equivalent recommended.
15. To re-assemble valve follow steps 1 through 11 in reverse order, tightening to the bolt torques recommended in the chart below.

IMPORTANT

When re-assembling valve ensure that holes in lower part (18) of valve, diaphragm (24) and cover (3) are in line. When tightening diaphragm, if it stops turning before its tab lines up with that on the actuator, unscrew diaphragm totally until it backs off one screw thread, then retighten. The tab should now line up with that on the actuator. Also if attaching to actuator ensure all screw holes line up.

VALVE SIZE	DIAPHRAGM MATERIAL BOLT TORQUE (IN-LB)		
	EPDM	Viton	Teflon
½	44	44	44
¾	44	44	44
1	44	44	44
1-1/4"	80	80	106
1-1/2"	80	80	106
2	124	124	159
2-1/2"	354	354	443
3"	354	354	443
4"	266	266	354



PART #	DESCRIPTION	MATERIAL
1	PLUG	PP/GLASS
2	COVER	SP. STEEL
3	SPRING (outer)	SP. STEEL
4	SPRING (middle)	SP. STEEL
5	SPRING (inner)	SP. STEEL
6	SPINDEL	STEEL
7	DIAPH. SUPPORT PLATE	CAD PLATED STEEL
8	WASHER	PERBUNAN
9	CONTROL DIAPH	NEOPRENE
10	O-RING	PERBUNAN
11	SPACING RING	STEEL
12	WASHER	PERBUNAN
13	SPRING SUPPORT PLATE	STEEL
14	WASHER	STEEL
		CAD PLATED

PART #	DESCRIPTION	MATERIAL
14	WASHER	STEEL
15	LOCK NUT	M.8.8. CAD PLATED
16	SPRING WASH.	MS
17	QUAD RING	PERBUNAN
18	LOWER PART	PP/GLASS
19	SPINDEL BEAR.	METAL/TEFLON
20	PLUG	PE
21	WASHER	STEEL
		CAD PLATED
22	INT. HEX. SCREW	M.8.8. CAD PLATED
23	COMPRESSOR	PBTP
24	DIAPHRAGM	VARIABLE
25	VALVE BODY	VARIABLE
26	WASHER	STEEL
		CAD PLATED
27	HEX SCREW	M.8.8.
		CAD PLATED
28	PROTECTIVE CAP	PE

CHEMLINE PLASTICS CHEMLINE

DATE _____ **REV.** 0

SCALE _____ **DR. BY** _____ **DWG. NO.** _____ **APP. BY** _____

TITLE CHEMLINE 700 SERIES NOMALLY CLOSED
REFERENCE DIAPHRAGM VALVE SIZES 1/2"-4"

NCDV