

MAINTENANCE INSTRUCTIONS

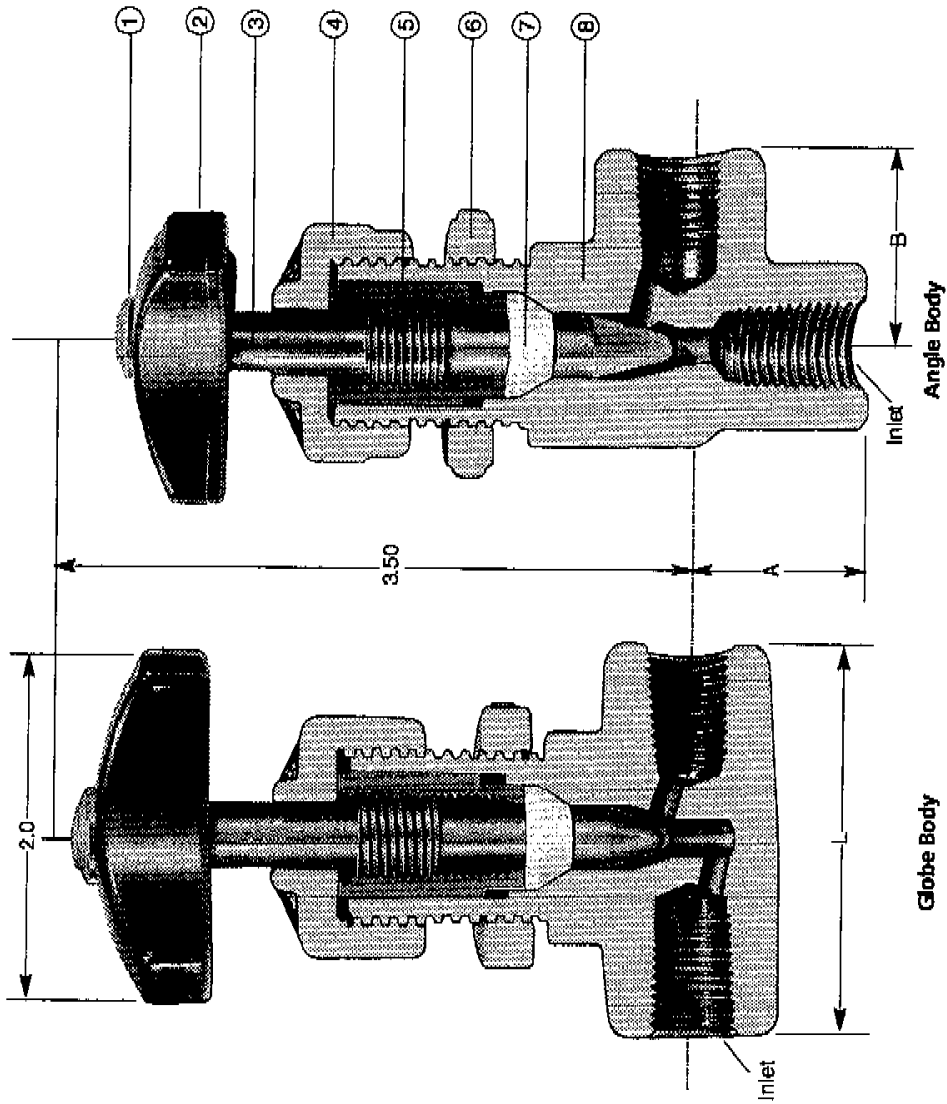
For Chemline Needle Valves Sizes 1/4" - 3/8" - 1/2"

Maintenance (all sizes):

Refer to **ASSEMBLY DRAWING CNV1 rev 0**. And proceed as follows:

1. Valve can be serviced in line as unit's complete topworks can be removed in one piece.
2. Remove panel nut (6) and lift off bonnet (4).
3. Handle (2) stem (3) and thread insert (5) will lift out in one piece.
4. Remove and inspect seal (7) for wear and abrasion.
5. Replace seal if necessary.
6. To reassemble valve follow steps 2 through 5 in reverse order.

Note: Seal wear can be compensated for by hand tightening the cap.



PARTS

No.	Part*	Pcs.	Materials
1	Coloured Button	1	PVC
2	Handle	1	PVC, CPVC, PPG
3	Stem/Needle	1	PVC, CPVC, PPG, PVDF
4	Bonnet	1	PVC, CPVC, PPG
5	Thread Insert	1	Nylon, PPG
6	Panel Nut	1	PVC, CPVC, PPG
7	Seal	1	PTFE
8	Body	1	PVC, CPVC, PPG, PVDF

*Threaded insert in reinforced Nylon for PVC and CPVC valves, PPG for PPG valves.

DIMENSIONS INCHES

Size	L	A	B	Globe Angle	Orifice
1/4"	2.33	1.10	1.20	.187	.250 .187
3/8"	2.33	1.10	1.20	.187	.250 .187
1/2"	2.50	1.18	1.25	.218	.250 .218

CHEMLINE
Plastics Limited

Dwg. No.:
CNV1